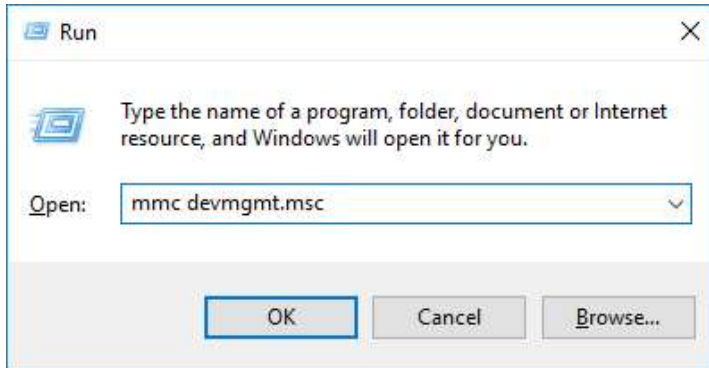


## 2. Next uses

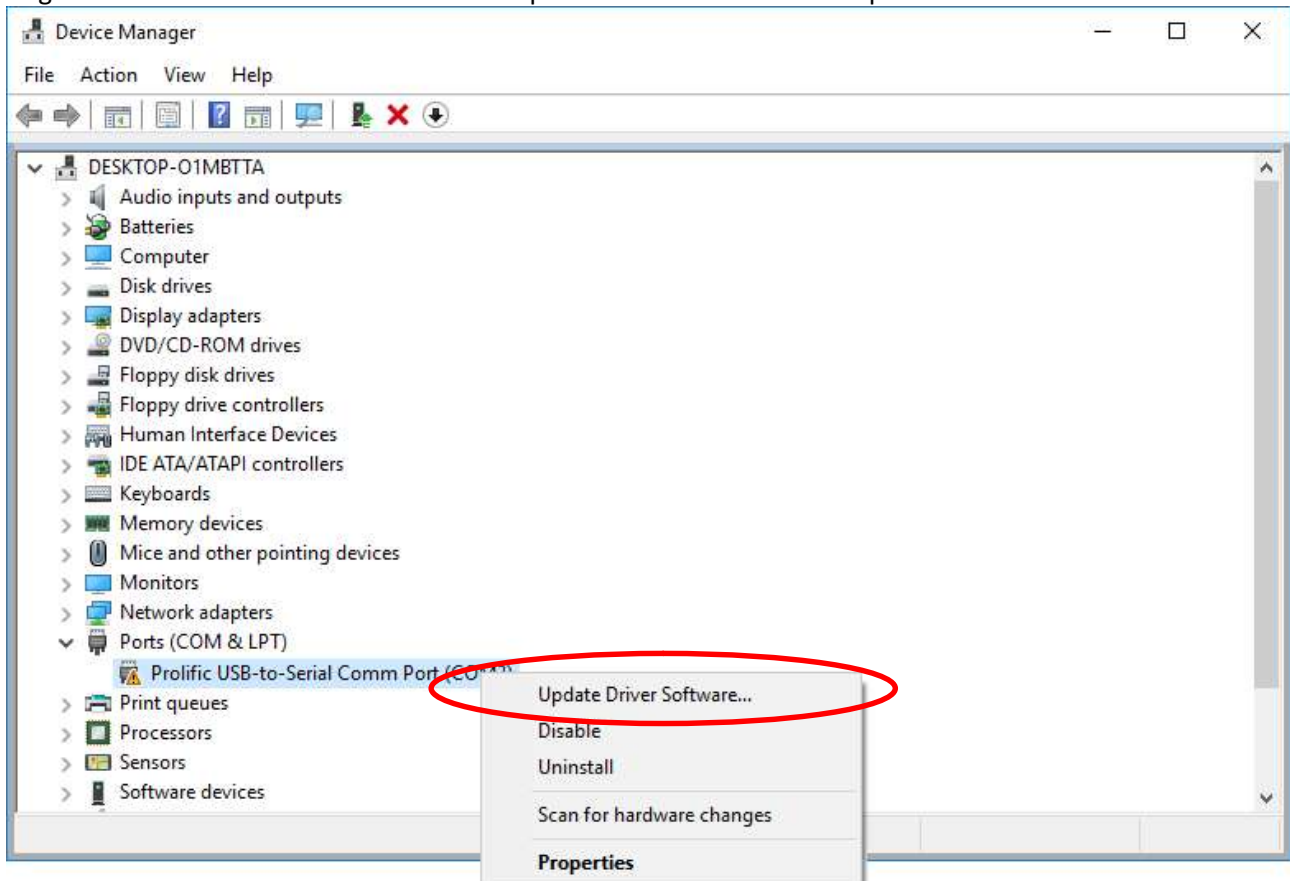
- Go to the Device Manager menu

To do this:

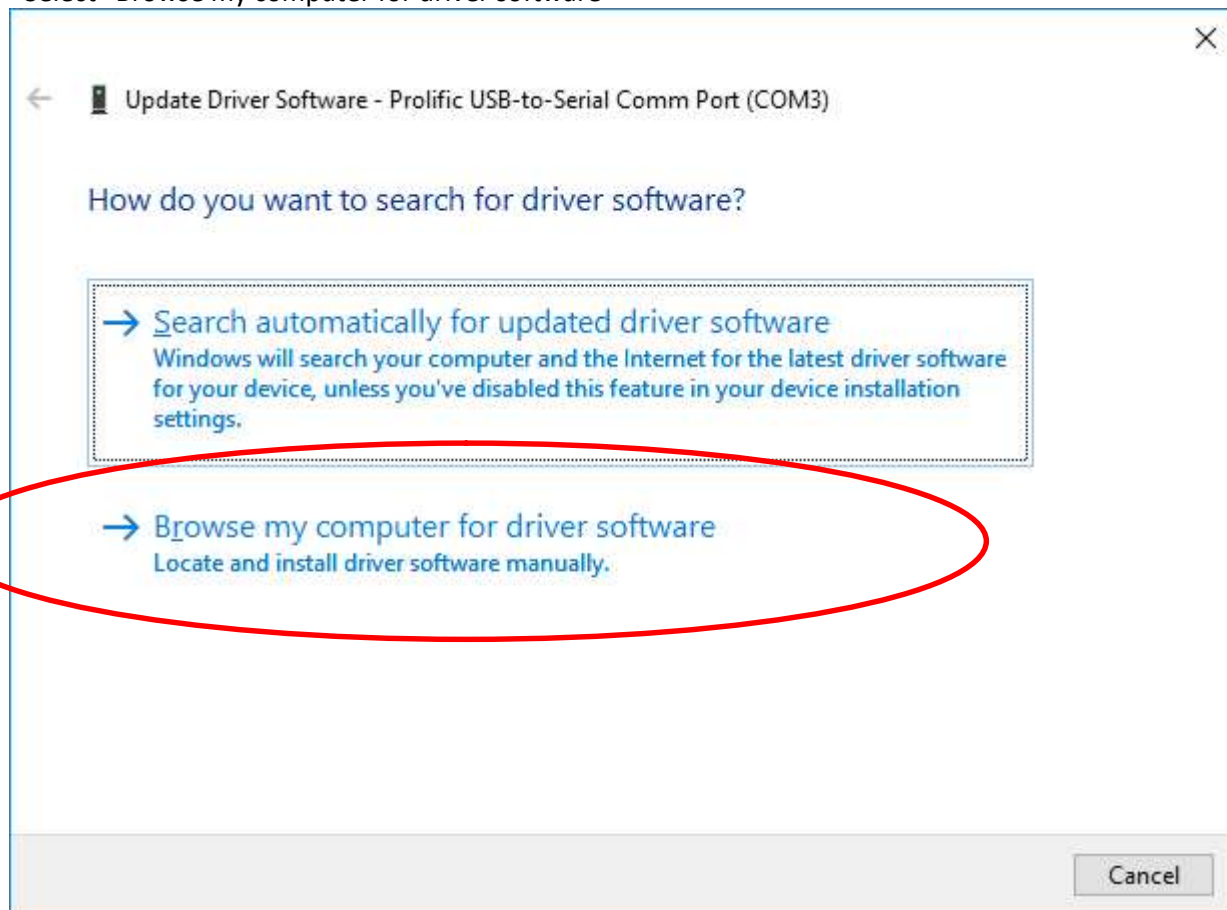
- Press at the same time Windows button + R
- Type "mmc devmgmt.msc" in the Run window



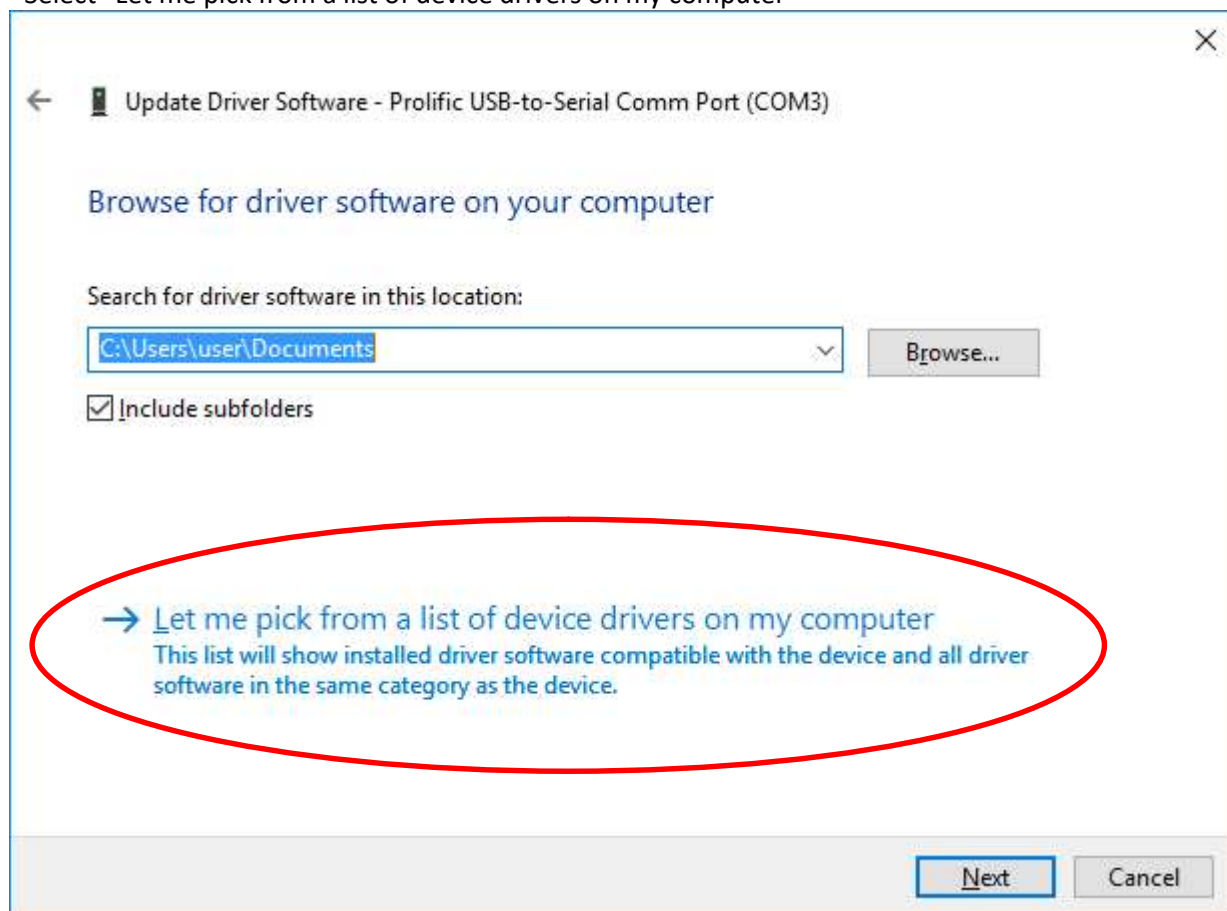
- right click with mouse on the usb-to-serial port converter and select "Update Driver Software"



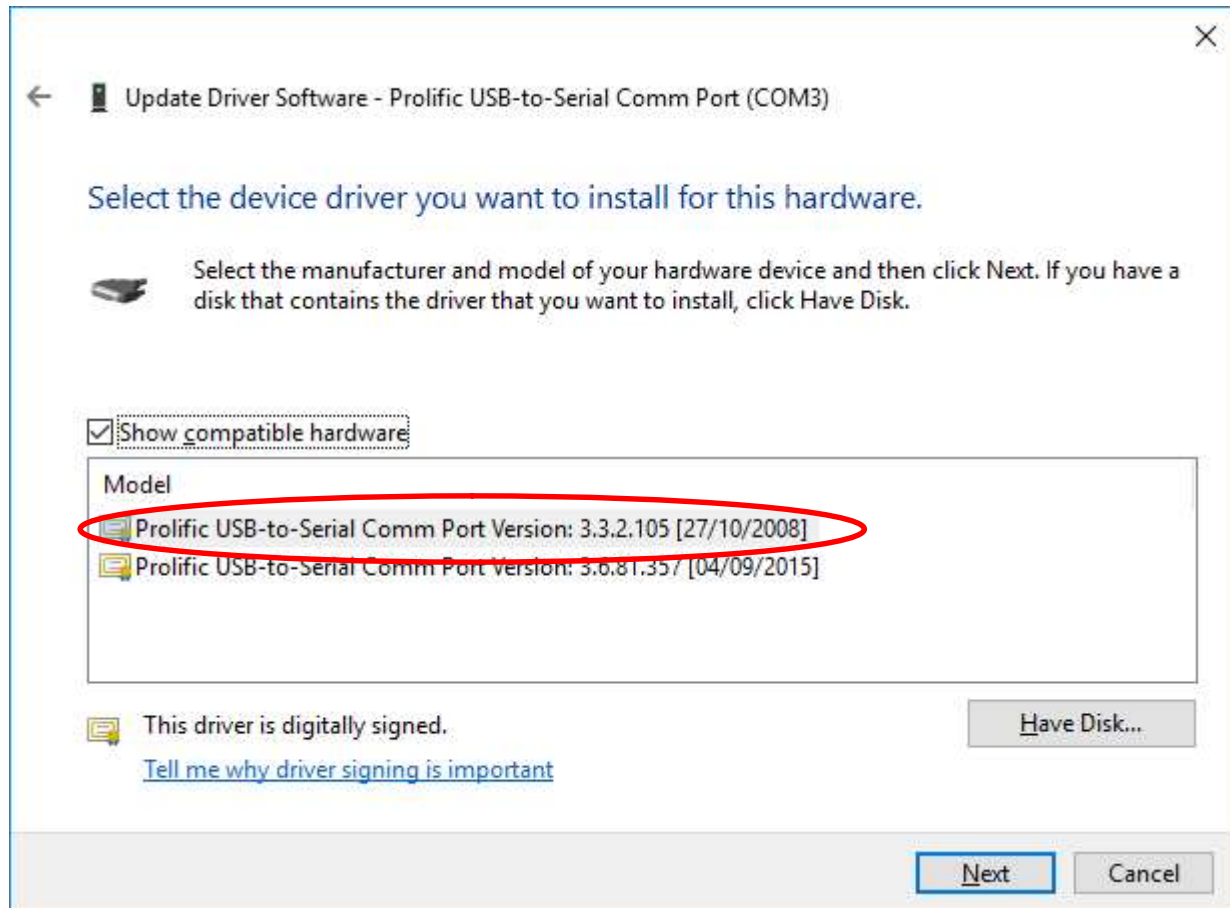
- Select "Browse my computer for driver software"



- Select "Let me pick from a list of device drivers on my computer"



- Select 2008 driver version and click Next



- Wait for the end of procedure

